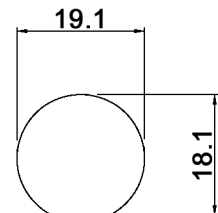
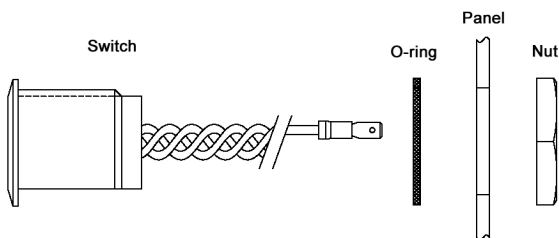


PANEL CUT-OUT



Panel thickness: 0.7 - 10.0



LAYOUT

Cable position		Power	Load (NO)	Load (NC)
V _{in}	red	V ₊	V ₊	V ₊
V _{out} (NO)	white		V ₋	
GND	green	V ₋		

Specifications:

- Contact rating: 1.5A, 5-30V DC
- Contact resistance: 20mOhm max.
- Operating temperature: -40°C to +85°C
- Electrical life: 1 000 000 cycles
- Power consumption: 10mA (max.)
- ESD resistance: +/-2kV (25 contacts) / +/-8kV (25 air discharges)
- Switch function: OFF - (ON)
- Impact resistance: IK10
- Water-proof rating: IP68 / IP66 (front panel)
- UV resistance: UVA / UVB
- LED color: blue/green
- LED power consumption: 20mA
- Activated by a finger, even with gloves
- Material: Case / key: aluminum (anodized)
Body: PC, UL94V-0
Cable: 22AWG, UL1007
Glue: epoxy, white
O-ring: foam plastic
Nut: carbon steel, nickel plated

Compliance: RohS III (2015/863/EU)

Tolerances:0.00 to 10.00: ±0.05mm 10.01 to 20.00: ±0.08mm 20.01 to 30.00: ±0.10mm	Date	Name
	12/14	dr
PN / rating	01/20	dr
Revised	09/16	dr
Modifications	Date	Name

CTK01-02-B2-T21-01N-R-BG

knitter-switch

30 32 27

Page

1/1